

Welsh Blanket Cowl Sublime Natural Aran Knitting Pattern

By Lara Williams



Circumference: 59cm

Height: 35.5cm

Needles: 5.0mm circular needle, 6.0mm needle for casting off, can be straight, circular or double pointed.

Tension/Gauge (10x10cm) Stitches: 20 **Rows:** 22 (fair isle stockinette stitch)

Yarn - 4 x 50g balls of Sublime Natural Aran:

1 x Ecu (429)

1 x Portobello (428)

1 x Smithy (426)

1 x Gracie (427)

Instructions

In the charts I have used cream to represent Ecu; grey for Smithy; red for Portobello and green for Gracie.

1. CO 120 stitches in Smithy.
2. Place stitch marker and join.

3. K2 P2 for 6 rounds.

4. Knit Chart A, each row is knitted twice to complete a round.

5. Knit Chart B, again each row is knitted twice to complete a round.

6. Once the chart is complete, knit 1 round in Smithy.

7. K2 P2 for 9 rounds in Smithy.

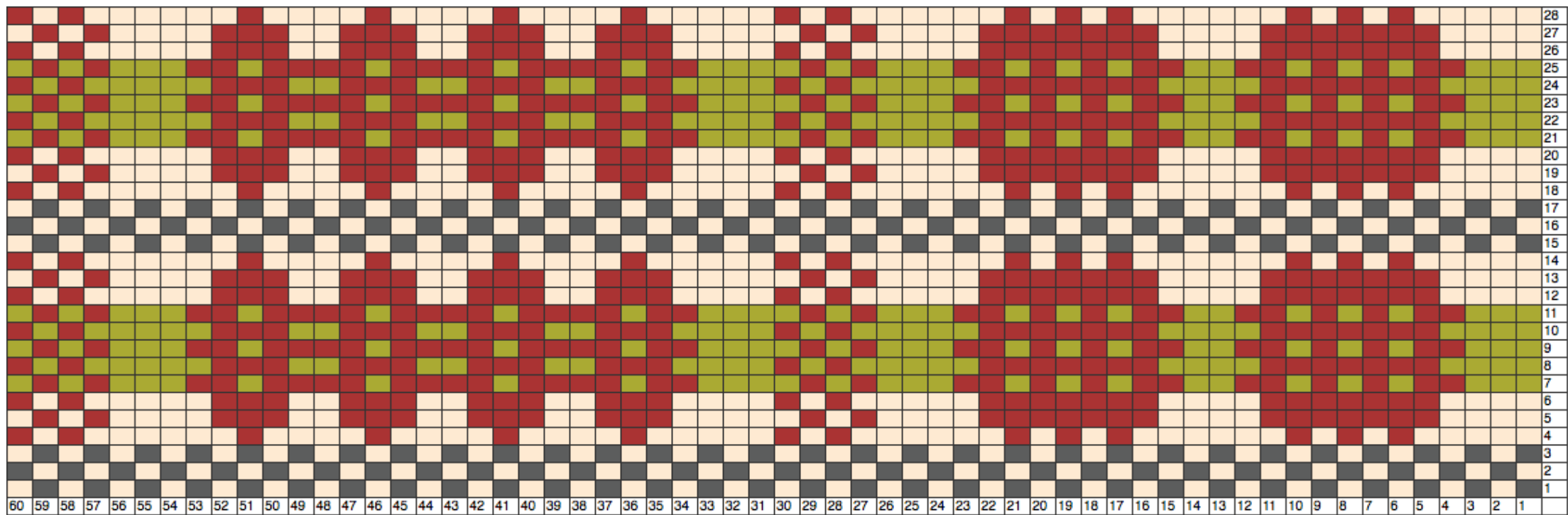
8. CO using the 6.0mm needle.

9. Weave in the ends, block, and you're done!

NOTES

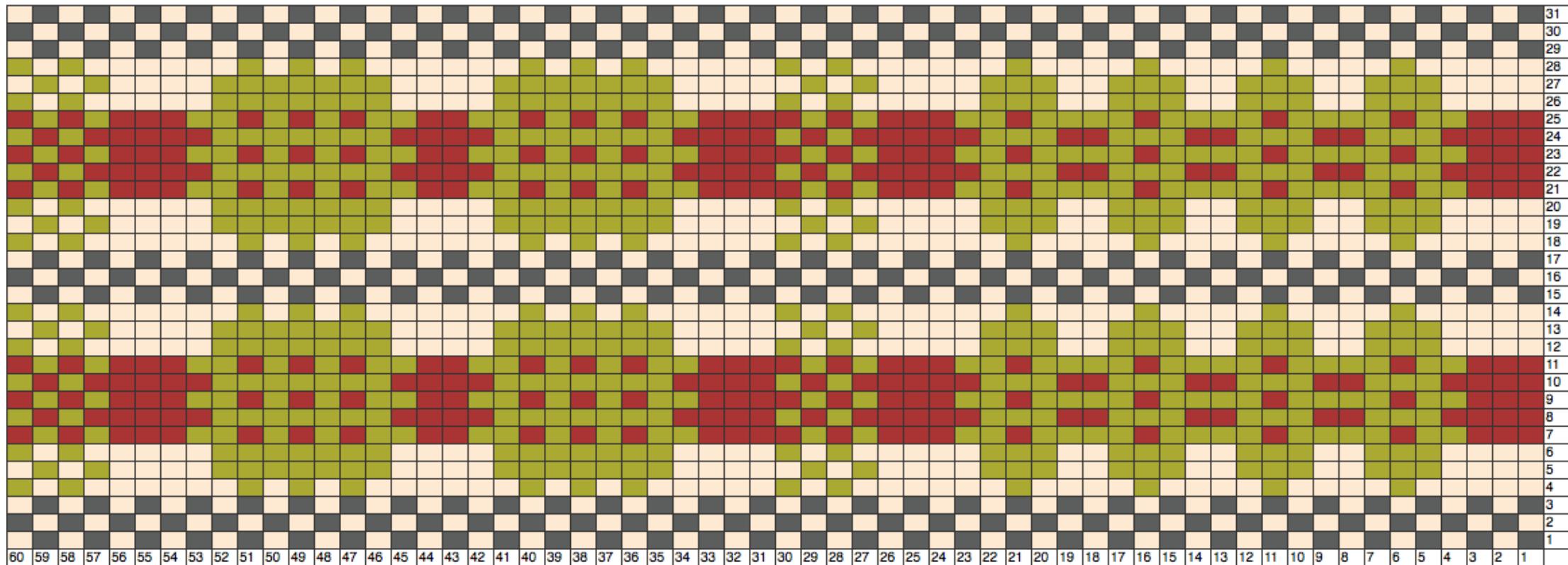
- On long stretches of one colour, I twisted the other yarn in every 3rd stitch to avoid long floats and to keep the inside looking neat.
- I carry the most recently added yarn over the other yarn.
- Casting off with the larger needle gives the cowl some gentle shaping, so the cast-off edge is the bottom of your cowl.

CHART A



<http://www.trickysknitter.com/view-a-color-chart/?id=82584>

CHART B



<http://www.tricksyknitter.com/view-a-color-chart/?id=82786>