

# Ready to Roll Case



*Keep all of your accessories to hand in this adaptable case and you'll be ready to roll at a moment's notice...*

## ✧ Materials:

You'll need 4 fat quarters of fabric to make the case:

### Tanya Whelan Fabrics

Outer (top): [Sunshine Roses Hanky Roses - Yellow](#)

Outer (bottom): [Sunshine Roses Full Bloom Roses - Pink](#)

Lining: [Sunshine Roses Damask - Green](#)

Tie: [Petal Check - Taupe](#)

## ✧ You'll also need:

Medium-weight Iron-on Interfacing

Embroidery thread: [DMC Stranded Cotton](#)

Cotton thread for sewing

Embroidery and sewing needles

Fabric pen (water soluble)

## ✧ Finished Size:

6¼" tall by 4" closed / 12" open)

(16cm tall by 11cm closed / 30cm open)

## ✧ Cutting Instructions:

Outer (top) : 1 piece 12½ x 5½" (32 x 14cm)

Outer (bottom): 1 piece 12½ x 7½" (32 x 19cm)

Lining: 1 piece 12½ x 12½" (32 x 32cm)

Interfacing: 1 piece 12½ x 12½" (32 x 32cm)

Tie: 2 pieces 2 x 20" (5 x 51cm)

## ✧ Construction Notes:

A ¼" (5mm) seam is used throughout, unless otherwise stated.

Seam allowance has been included in the cutting directions.

## ✧ Pattern Notes:

A full written pattern with plenty of pictures and diagrams to help you at each step of the way.

## Preparing the Panels

1. Cut the fabric to the sizes given on the first page.



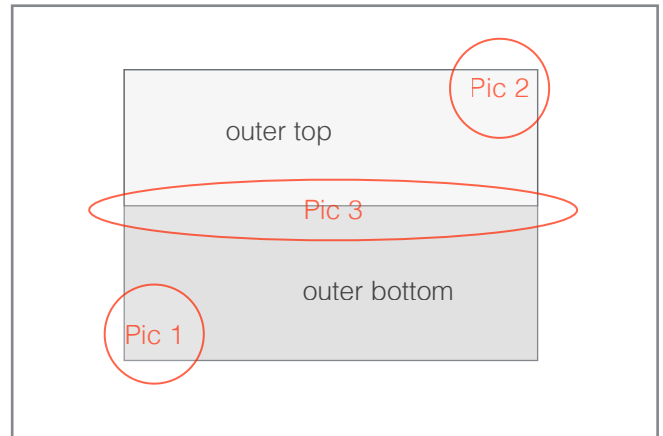
2. Prepare the lining piece by ironing the interfacing to the wrong side of the fabric, then set aside.
3. Take the bottom piece of the outer fabric and place it down with the right side facing upwards, long edge at the top. Then take the top piece of outer fabric and place it with the right side facing downwards on top of the bottom outer piece, long edge also at the top.
4. Line the top edges of the fabric up, pin in place and sew along the top line.



5. Open out the fabric and press the seam, you will now have a completed outer piece measuring 12½ x 12½" (32 x 32cm) to match your lining.

## Embroidery Details

6. Take the outer piece of fabric and using the embroidery thread, decorate the fabric with some embellishments. See the following diagram to show where to work the decorative elements and use the photos below as a guide.



**Picture 1** (Shown right side up)



The heart motif worked in this bottom right corner is worked upside down, so that it will appear correct on the finished case.

**Picture 2**



Use a simple running stitch under the middle seam.



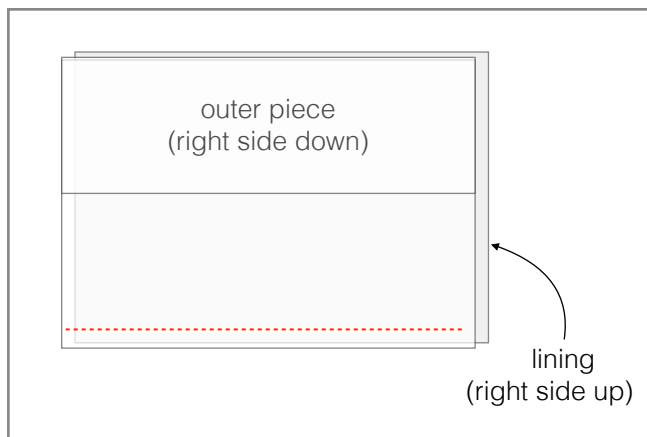
Picture 3



The cross stitch motif in the top left corner is also worked up side down so that it will appear correct on the final case.

## Constructing the Case

7. Take the lining fabric and place it down with the right side facing upwards, then take the outer fabric and place it on top with the right side facing downwards. The seam on the outer fabric should be running horizontally across the middle.
8. Pin the fabrics together and sew along the bottom edge.



9. Open the fabrics out and then fold along the seam just sewn so that the right side of the outer and lining fabric are facing outwards. Press the seam to set the fold.
10. Open out the fabrics once more and place them right side facing upwards, with the lining at the top. Measure up 4" (10cm) from the seam line at the bottom of the lining fabric and then bring the seam upwards so that the lining fabric folds on the 4" (10cm) line.



11. Then fold the outer fabric up to lay face down on top of the other layers, with the raw edges of both the outer and lining fabric meeting at the top. Pin the fabric into place ready for sewing.



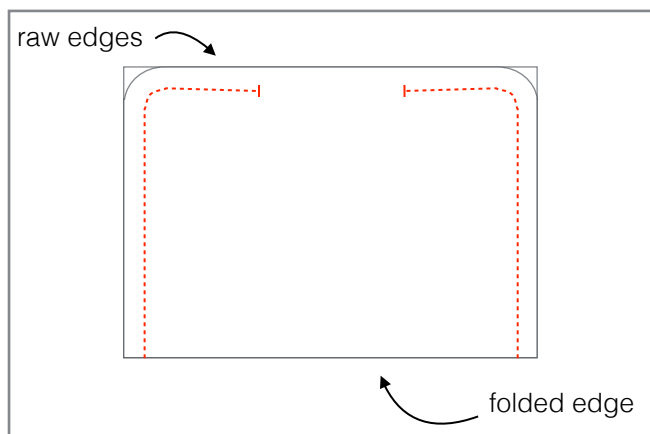
12. If the fabric has been folded correctly you should have an opening at the bottom. This will form the pockets of the case once everything is turned the right way around.



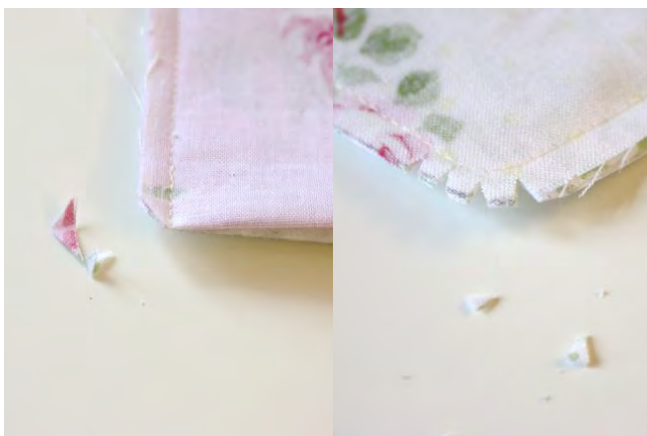
13. Use a cotton reel to draw a rounded corner onto each of the top two corners, where the raw edges meet.



14. Then sew along the two edges and along the top, but leave an opening along the top to turn the case the right way around.



15. Cut the triangles off the bottom corners of the fabric at the folded edge. Cut around the curved edges at the top corners, leaving a seam allowance. Finally cut a few small 'v' shapes into the fabric around the corners, making sure not to cut through the sewn line.



16. Use the opening at the top to turn the case the right way round. Making sure the folded pocket is facing the lining side.
17. Push all the corners out neatly and give the whole case a good press.
18. Tuck in the raw edges of the opening and hand sew closed using small stitches.
19. To sew the pockets, use a fabric pen to mark lines to mark the pocket sizes. The lines can be close together for small pockets or wider apart from larger pockets.



20. Once the pen lines have been made as a guide, sew along each line to form the pockets, making sure to secure both ends of each sewn line with a few back stitches.

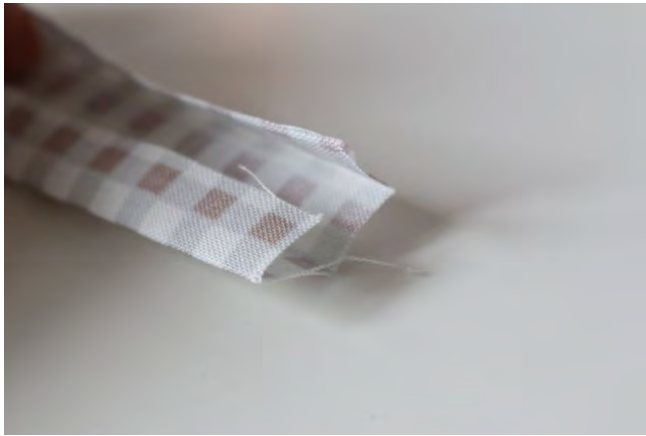
## Finishing Touches

21. To make the tie, take the two pieces of tie fabric. Place one piece with the right side facing up and lay the second piece, with the right side facing down, at right angles on top of it.
22. Pin the fabric in place and mark a line diagonally from corner to corner as shown below.





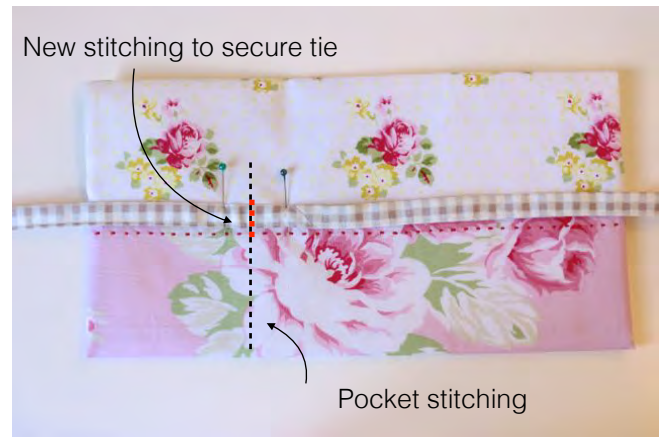
23. Sew along the marked line and then cut off the spare corner of fabric leaving a seam allowance.
24. Press the seam open.
25. Fold the fabric in half along the length and press.
26. Open the fabric back out and then fold the raw edges on each side in towards the centre fold and press again.



27. Finally, fold the fabric in half again on the centre fold line and press once more. This will tuck the raw edges inside the fold.
28. Sew along the open edge of the tie to close with a small seam of  $\frac{1}{8}$ " , remembering to tuck in the raw edges on both the short ends before sewing into place.



29. Turn the case over and lay the tie along the back of the case. The tie will be secured just in one place, on the left third of the case, so that it can be wrapped around and tied into place when the case is folded.
30. Pin the tie in place. Make a line of stitches running over the tie vertically. Make sure that the new stitches being made line up with one of the already sewn lines of the pocket stitching, so that you don't sew in the middle of a pocket. See the following picture to help you.



31. Turn the case over and fold down the top edge by approximately  $1\frac{1}{2}$ " (4cm) and press into place.
32. To help the top flap stay folded and protect the contents of the case, make a few stitches inside each corner.



Now all you need to do is fill the case with all your crafty accessories so they are handy whenever you need them.



- ★ You can also easily adapt the pattern to make different size cases to store all sorts of other useful things. Pens and pencils to take to school, artist brushes, jewellery making kit or even knives and forks for a picnic.